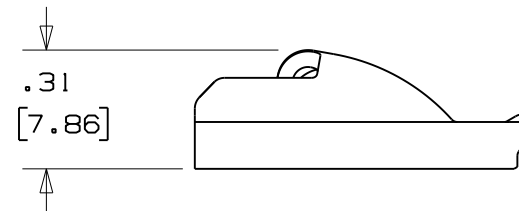
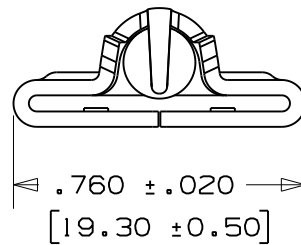
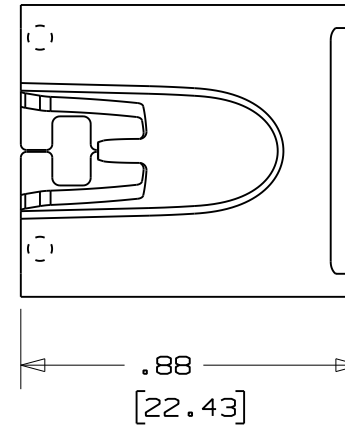


THIS COPY IS PROVIDED ON A RESTRICTED BASIS AND IS NOT TO BE USED IN ANY WAY DETRIMENTAL TO THE INTERESTS OF PANDUIT CORP.

NOTES:

1. TO BE USED WITH PANDUIT METAL BANDING MBSH-TR.
2. APPLICATION TOOL: RT2HT
3. DIMENSIONS IN BRACKETS [] ARE MILLIMETERS.
4. MINIMUM LOOP TENSILE STRENGTH: 450 lbs (2002 newtons)
5. TOLERANCES:
 - .X = $\pm .030$ [.762]
 - .XX = $\pm .020$ [.508]
 - .XXX = $\pm .010$ [.254]
 - ANGLES = $\pm 2^\circ$



N41204BS_DC/00A

					<h1 style="margin: 0;">PANDUIT</h1> <p style="margin: 0;">CORP. TINLEY PARK, ILLINOIS</p>		
					<p style="margin: 0;">METAL LOCKING TIE HEAD-SUPER HEAVY DUTY FOR UNCOATED BANDING PART NO. MTHSH-C (CUSTOMER DRAWING)</p>		
					UNLESS OTHERWISE SPECIFIED, DIMENSIONAL TOLERANCES ARE: (.X) \pm (SEE (.XXX) \pm (SEE (.XX) \pm NOTES) ANGLES \pm NOTES)		UNLESS OTHERWISE SPECIFIED, ALL DIMENSIONS ARE GIVEN IN INCHES, THIRD ANGLE PROJECTION.
OOA	10/08	JAMB	SKB	ORIG CAD FILE SPEC WAS S41204_00. NOTE 2: APPLICATION TOOL RT1HT REPLACED BY RT2HT	DRAWN BY JAMB	MAT'L:	SCALE 2x
00	8/05	JAMB	EJD	DRAWING RELEASED	SS00016	DATE 8/9/05	DRAWING NO. N41204BS_DC
REV	DATE	BY	CHK	DESCRIPTION	ECN #	CHK'D EJD	DWG SIZE A
						304 STAINLESS STEEL	